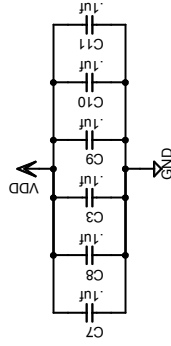
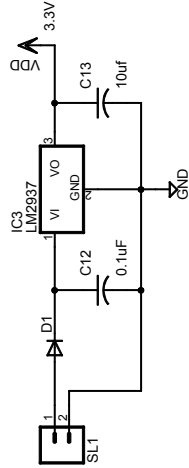


NOTE: The RBIAS resistor is different between silicon revisions
 B1 - B4 = 2.70k/1%
 B5 - B7 = 2.32k/1%
 B5 or greater is required due to SPI clock limitations



NOTE: The decoupling caps should be positioned around the power inputs for each chip.
 4 Caps - Each ENC28J60 power pin
 1 Cap - Propeller power pin (only need one total)
 1 Cap - SD card power



NOTE: Regulator needs to be able to handle at least 500mA (heatsinked)
 Do not exceed -6V on the input, otherwise the regulator may overheat.